



Sturminster Newton High School Sixth Form

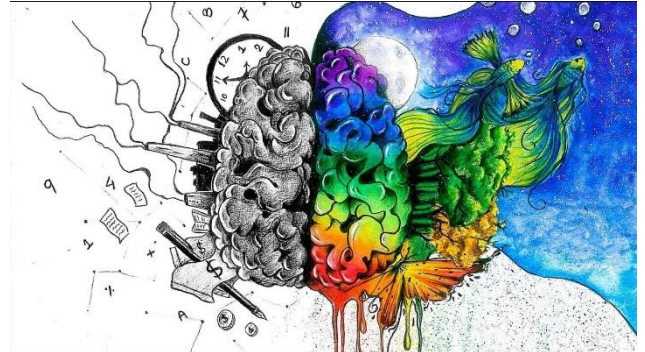
Psychology Transition Project

Board: AQA

Type: A Level

School: Sturminster Newton High School

Contact: Mr T Enticknap and Mrs K Collins



Introduction

Below are a series of tasks that will introduce you and prepare you for the start of A-Level Psychology. The expectation is that all tasks are completed and presented to Mr Enticknap and Mrs Thompson in September. This will allow you to explore some of the early topics and concepts of Psychology. They can be completed in any order, but please ensure each task is its own separate piece of work.

Details of work

Task 1: Introduction

Research the origins of Psychology, with particular reference to Wilhelm Wundt (1832 - 1920) and the emergence of Psychology as a science.

Try not to use just one website (e.g. Wikipedia) but read several sources of information, summarise them yourself and present in a short written essay.

Task 2: Carry out an experiment

How much information can a person store in their short-term memory?

Given the current circumstances carry out this experiment on people in your family home. If you can ask others to do it so that you have a larger set of results, then do that as well.

Look at the list of words below for 2 minutes. Then remove them from sight. Ask the participant to write down as many words as they can remember. Give them 2 minutes.

Nine	Swap	Cell	Ring	Lust
Plugs	Lamp	Apple	Table	Sway
Army	Bank	Fire	Hold	Worm
Clock	Horse	Colour	Baby	Sword
Desk	Hold	Find	Bird	Rock

How many did they get right? Record the results.

Repeat with the following set of words.

Horse	Cat	Dog	Fish	Bird
Orange	Yellow	Blue	Green	Black
Table	Chair	Desk	Bookcase	Bed
Teacher	School	Student	Homework	Class
Apple	Banana	Kiwi	Grape	Mango

How many did they get right? Record the results.

Is there a difference between results?

Calculate the mean average number of words remembered for the two lists.

What does this suggest?

Other key questions to consider:

- On average, how many words can a person remember?
- Can other factors such as gender and age have an impact on memory?
- Do people tend to remember certain words more than others?
- What strategies might improve memorisation?

Task 3: Experimental Design

Design an experiment to show whether noise affects concentration.

Include:

- Aim
- Hypothesis
- Identify the Independent and the Dependant Variables
- State what the most applicable method of sampling would be and give a strength and weakness of it.
- Describe who your sample would be and how you would gather your sample.
- Procedure - step by step instructions of how you would carry out the experiment
- Describe an ethical issue you would have to cover.
- Explain how you would analyse your findings.
- Suggest an appropriate way to present your findings.

Task 4: Research Task

You will need to use psychology books/magazines/journals or websites to research the following information. For each question, you are required to find the following pieces of information:

- Name of book/magazine/journal
- Author
- The page number or chapter you found the piece of information
- If a website is used the reference should be in this format:
Initial(s). Surname, 'Page Title', *Website* [website], publication date, section/paragraph number (if applicable), <URL>, accessed date.
- Answers to the questions

Psychopathology

Research questions:

1. What are the four definitions of abnormality?
2. What are the **emotional** characteristics of suffering from:
 - a. A phobia
 - b. OCD

Social Influence

Research questions:

1. Give a brief definition of normative social influence.
2. Provide and explain briefly one piece of research on normative social influence.

Memory

Research questions:

1. What did Bartlett (1932) see the human memory as?
2. What were the conclusions of Loftus and Palmer's study in 1974?

Research Methods

Research Questions:

1. What does it mean when a study has high ecological validity?
2. Provide an example of a study that lacks high ecological validity.

Who to contact if stuck

Mr Enticknap via email

Date and form of submission

Each task should be a separate piece of written work. Submitted in September in the first lesson.